



# SHEAR BALERS PCF





## SHEAR BALERS PCF

The PCF LINE range of machineries includes stationary shear balers with shearing force up to 1400 tons meant to an hard work and to get high quality scrap, cleaned and with high density.

PCF shear balers are suitable for compressing and shearing any type of scrap from collected scrap, demolition, rebars, profiles, pipes, LCS to mixed, bulky scrap , all types of cyty scrap E.L.V.

All the models of the line can be mounted on support structures divided in two main pieces connected, therefore are not required foundation works to be installed.

Shear Balers PCF boast widely dimensioned structures and main components all mechanically machined on high precision machining centers.



## PCF // MAIN FEATURES

### PCF 650

SHEAR		CHARGING BOX	
Cutting force	650 ton	Cover force	250 ton
Clamp	90 ton	Charging box lenght	6000 mm
Knives width	1000 mm	Charging box width	2400 mm
INSTALLED POWER		Bale dimension	600x880 mm
Electric motors	150 kw	Main compression cylinder	150 ton
Total installed power	160 kw		

### PCF 850

SHEAR		CHARGING BOX	
Cutting force	850 ton	Cover force	400 ton
Clamp	150 ton	Charging box lenght	7000 mm
Knives width	1100 mm	Charging box width	2800 mm
INSTALLED POWER		Bale dimension	600x880 mm
Electric motors	225 kw	Main compression cylinder	210 ton
Total installed power	250 kw		

## PCF // MAIN FEATURES

### PCF 1200

SHEAR		CHARGING BOX	
Cutting force	1200 ton	Cover force	450 ton
Clamp	180 ton	Charging box lenght	7000 mm
Knives width	1100 mm	Charging box width	3200 mm
INSTALLED POWER		Bale dimension	700x1000 mm
Electric motors	225 kw	Main compression cylinder	250 ton
Total installed power	250 kw		

### PCF 1400

SHEAR		CHARGING BOX	
Cutting force	1400 ton	Cover force	480 ton
Clamp	200 ton	Charging box lenght	800 mm
Knives width	1200 mm	Charging box width	3400 mm
INSTALLED POWER		Bale dimension	700x1000 mm
Electric motors	300 kw	Main compression cylinder	280 ton
Total installed power	350 kw		

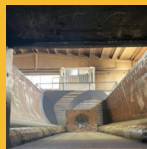
# SKILLS

up to **1400** ton  
**SHEARING FORCE**



HIGH THROUGHPUT ton/h

LOW MAINTENANCE COSTS



## WEAR PLATES

All the components subject to wear are covered with steel wear plates.

Where is possible the wear plates are bolted directly on the structures to permit an easy and quick replacement.



## TOUCH SCREEN

Monitor touch screen to monitorate the processes: bale cycle, shear baler cycle, shear cycle.

Synoptic 3D integrated to view in real time all the parameters, the alarms and various data.



## REMOTE CONTROL

Remote control to use the machine from distance with LED indication of the posiotining of the covers closed, emergency,joysticks, selector for the choosing of the cut lenght and cycle buttons



## PROPORTIONAL DISTRIBUTORS

Proportional distributors to enable delicate opening and closure of the covers and to eliminate the pressure shocks typical of these movements.



## CYLINDERS

Double effect cyclinders equipped With wide gaskets V – rings and cylindrical

Bronzes to increase the seal, simplify and

Makes less expensive the maintenance.

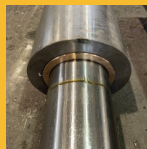


## AWC

New system of AUTO closure of the covers.

This system is useful to accelerate the cycle and ensures the covers are correctly closed.

This system can be selected and excluded by a selector.



## HIDDEN HINGES

Hinges, covers and frame of the box are hidden , equipped with centering bushes and bronzes easily interchangeable.

Pins and bushes are widely dimensioned.



## ECCENTRICITY

The guide jibs are really adjustable using the pins installed at the side of the shear head.

This system is efficiency to temporarily avoid the changing of the structural guides and of the guillotine guides.



## MEASUREMENT TRANSDUCERS

Measurement transducers installed directly inside the cyclinders.

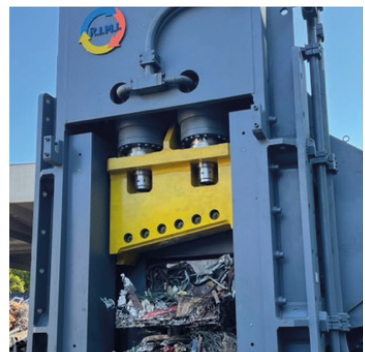
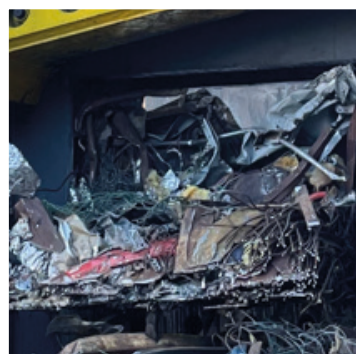
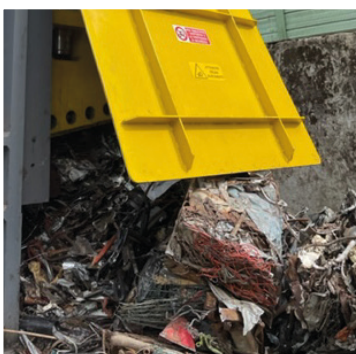
Innovative system to increase the speed of the automatic cycle and to eliminate every possibilities to be damaged by accidental drop of scrap material.



## LASER

Laser installed on the longitudinal main compressor to control the position and to set the shear lenght.

This system replace the old traditional timer switch and ensures a pre-set costant shearing lenght.





di Andreacchio S. e C. s.a.s.

Via Castelletto 19  
15060 Silvano d'Orba (Al)

C.F. e P.IVA 01644220061

Tel. +39 0143 46115 | Fax. +39 0143 460849 | email. [info@rimisas.it](mailto:info@rimisas.it)

[www.rimisas.it](http://www.rimisas.it)